

Jamboree™

SAT

SYLLABUS

& EXAM PATTERN



DIGITAL SAT SYLLABUS & EXAM PATTERN

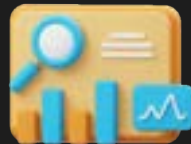
The digital SAT exam is a **2-hour and 14-minute** long test consisting of **two sections**. Here's a quick overview of the digital SAT exam:

Reading and Writing

 64 min.

2 Sections

54 Questions 

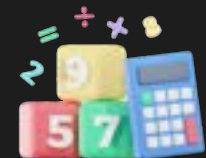


Math

 70 min.

2 Sections

44 Questions 



The total DIGITAL SAT exam score is **1600**

Digital SAT Math Section



Questions on the SAT Mathematics sections are based on the following topics:

Algebra

Algebra includes the following types of questions

- Linear equations in 1 variable
- Linear equations in 2 variables
- Linear functions
- Systems of 2 linear equations in 2 variables
- Linear inequalities in 1 or 2 variables

Advanced Math

Advanced Math includes the following types of questions:

- Equivalent expressions
- Nonlinear equations in 1 variable
- Systems of equations in 2 variables
- Nonlinear functions

Problem-Solving & Data Analysis

Problem-Solving and Data Analysis includes the following skills & knowledge testing points:

- Ratios, rates, proportional relationships, and units
- Percentages
- One-variable data: distributions and measures of center and spread
- Two-variable data: models and scatter plots
- Probability and conditional probability
- Inference from sample statistics and margin of error
- Evaluating statistical claims: observational studies and experiments

Geometry & Trigonometry

Geometry and Trigonometry measure the ability to solve problems that focus on the following:

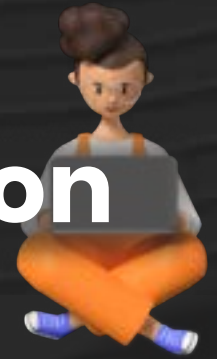
- Area and volume formulas
- Lines, angles, and triangles
- Right triangles and trigonometry
- Circles

Note: Digital SAT allows the use of calculators throughout the Math section.

Digital SAT Math Section

Around 30% of Math questions are contextualized, meaning they are presented in a real-world scenario related to science, social studies, or other areas of practical application. Answering these contextualized questions, also known as "word problems," involves utilizing your mathematical skills and knowledge in conjunction with an understanding of the given context to arrive at the correct answer.

Digital SAT Reading & Writing Section



The Reading and Writing section of the exam comprises passages of various lengths, ranging from 25 to 150 words. These passages cover a range of topics such as literature, history/social studies, the humanities, and science.

The questions in this section of the exam fall into four content domains, including Information and Ideas, Craft and Structure, Expression of Ideas, and Standard English Conventions. The four domains consist of:

Information and Ideas

Measures comprehension, analysis, and reasoning skills and knowledge and the ability to locate, interpret, evaluate, and integrate information and ideas from texts and informational graphics (tables, bar graphs, and line graphs)

Craft and Structure

Measures the comprehension, vocabulary, analysis, synthesis, and reasoning skills and knowledge needed to understand and use high-utility words and phrases in context, evaluate texts rhetorically, and make connections between topically related texts

Expression of Ideas

Measures the ability to revise texts to improve the effectiveness of written expression and to meet specific rhetorical goals

Standard English Conventions

Measures the ability to edit text to conform to core conventions of Standard English sentence structure, usage, and punctuation

JOIN THE **SAT 1500+** CLUB



Karthik, SAT Score 1540

★★★★★ 7 months ago

"Jamboree really helped me with Verbal, my verbal section score in practice tests before Jamboree used to be around 590 but after Jamboree my score went up to 700+ ."

SIGN UP

To be a part of our 32,769+ SAT achievers